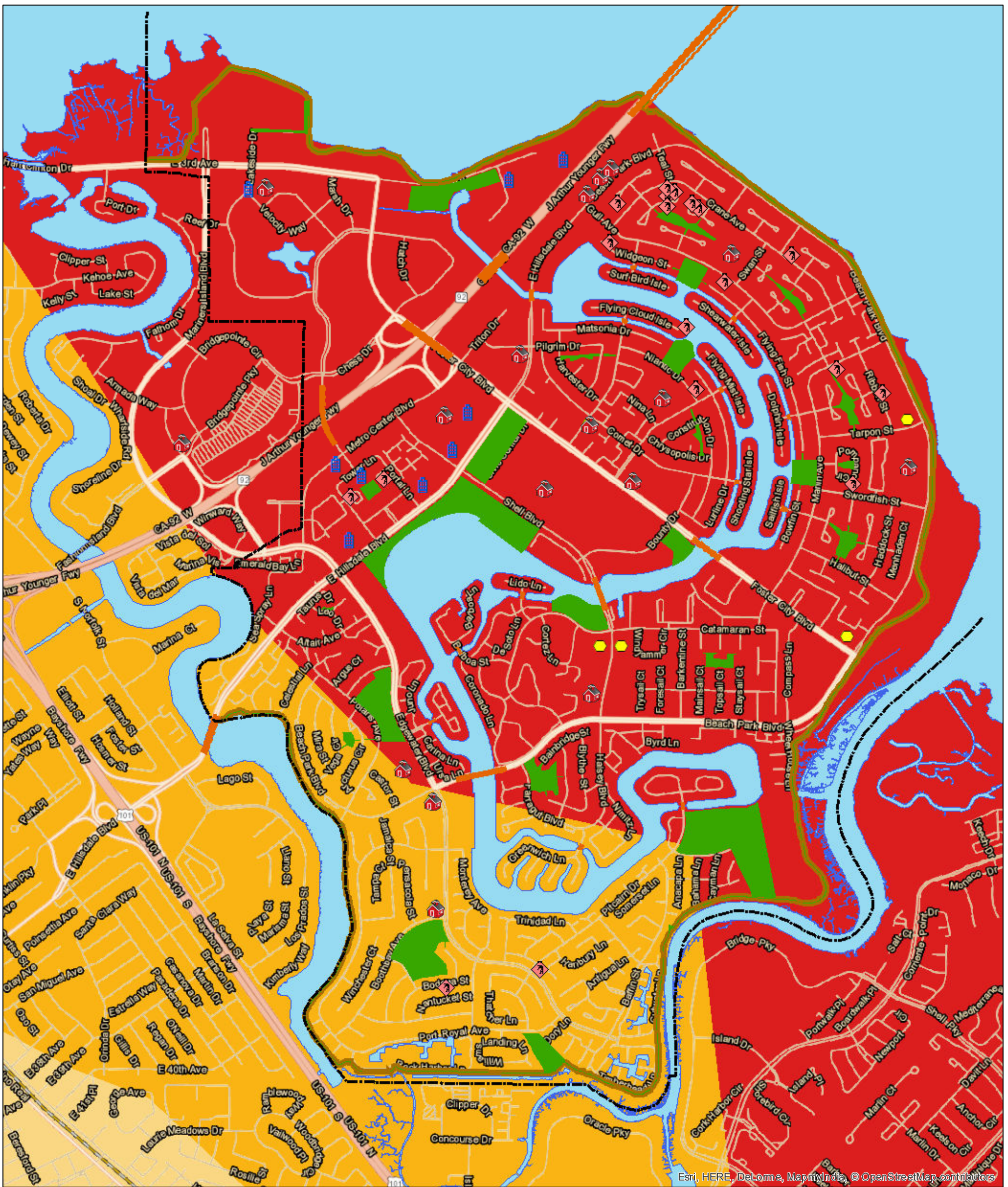


Ground Shaking Severity-M 7.0 Hayward (N-S) Fault



Esri, HERE, DeLorme, MapmyIndia, © OpenStreetMap contributors

Legend

- FCCityLimit
- Bridge
- Public & Private Schools
- Major Daytime Population Concentration
- Elderly Residential Facilities
- Religious Institutions
- Parks
- Levee Section
- Lagoon

Ground Shaking Severity (MMI*)

- MMI <5-Light
- MMI 6-Moderate
- MMI 7-Strong
- MMI 8-Very Strong
- MMI 9-Violent

*MMI-Modified Mercalli Intensity Scale

Map Scale

